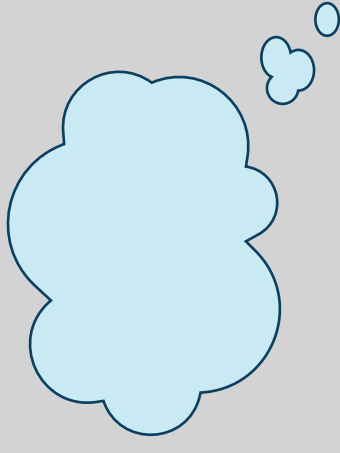
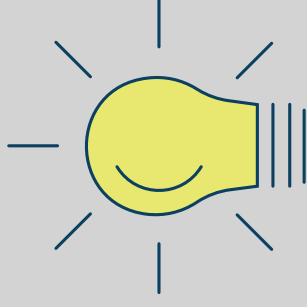


Research steps

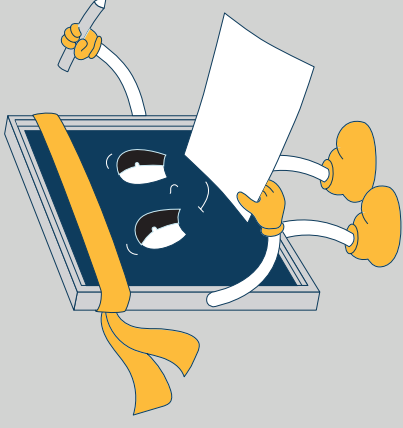
Assumption



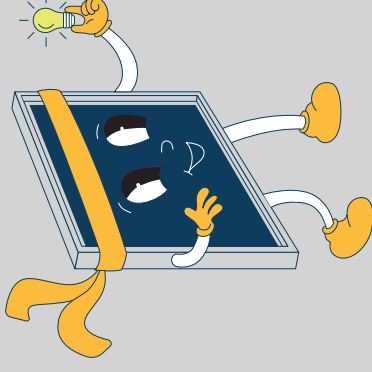
Testing



Record/
note results



Recognize

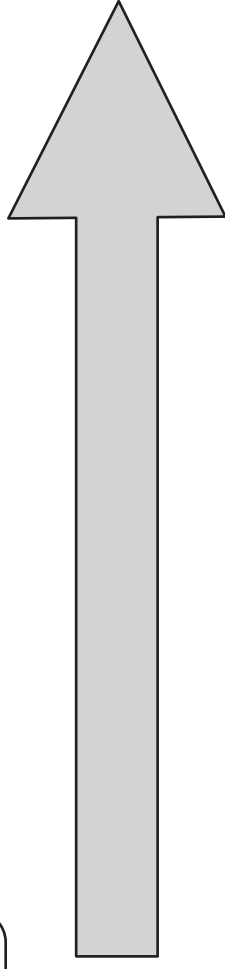
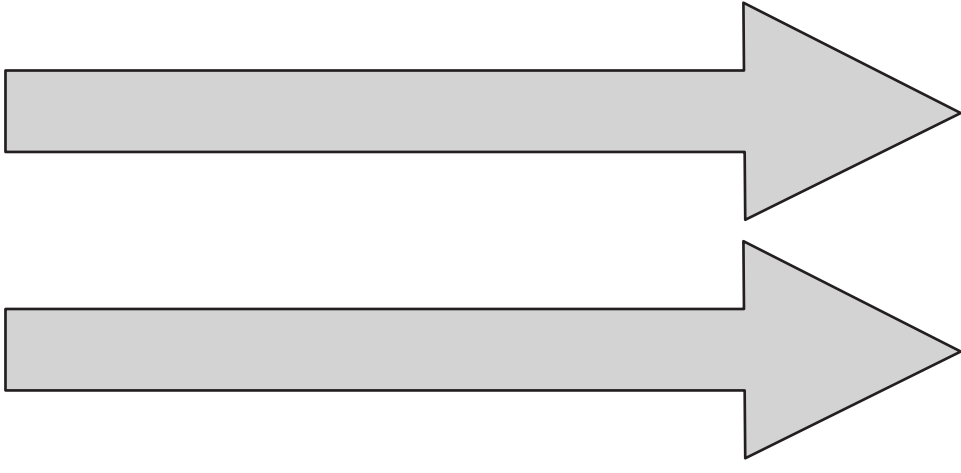


Word card "Light bulb"



Light bulb

Thread

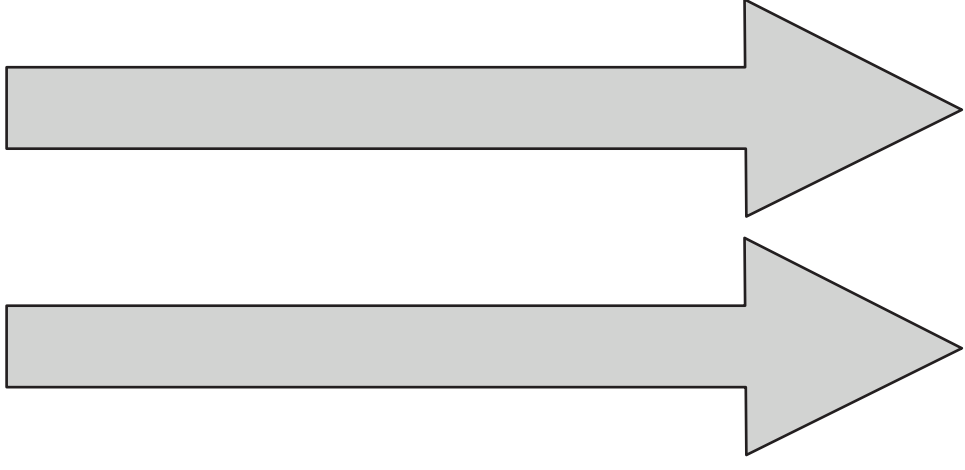


Filament

Lead wire

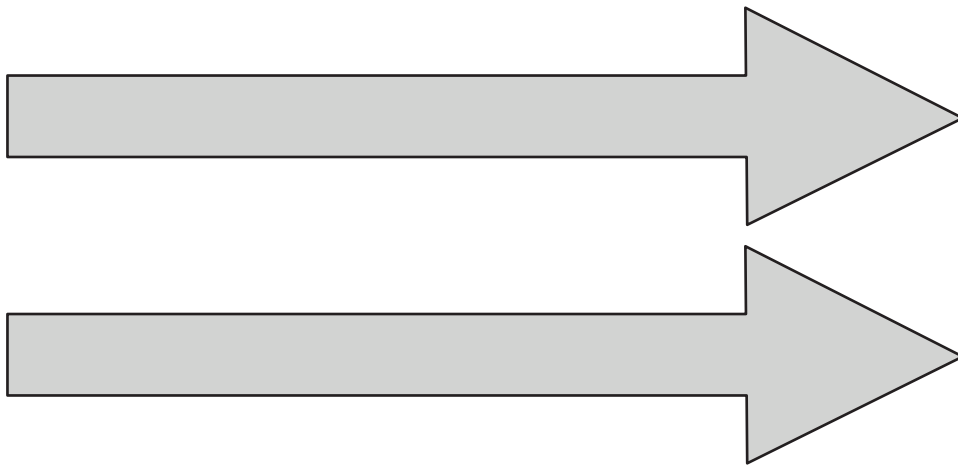
Contact plate

Glass flask



Battery

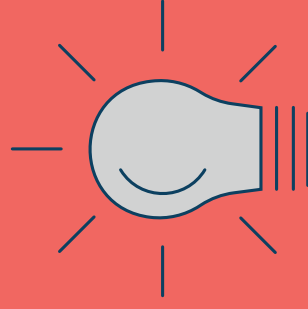
Negative
terminal



Positiv terminal



Conductive



Non-Conductive

Wood

Plastic

Fabric

Rubber

Iron

Aluminium

Copper

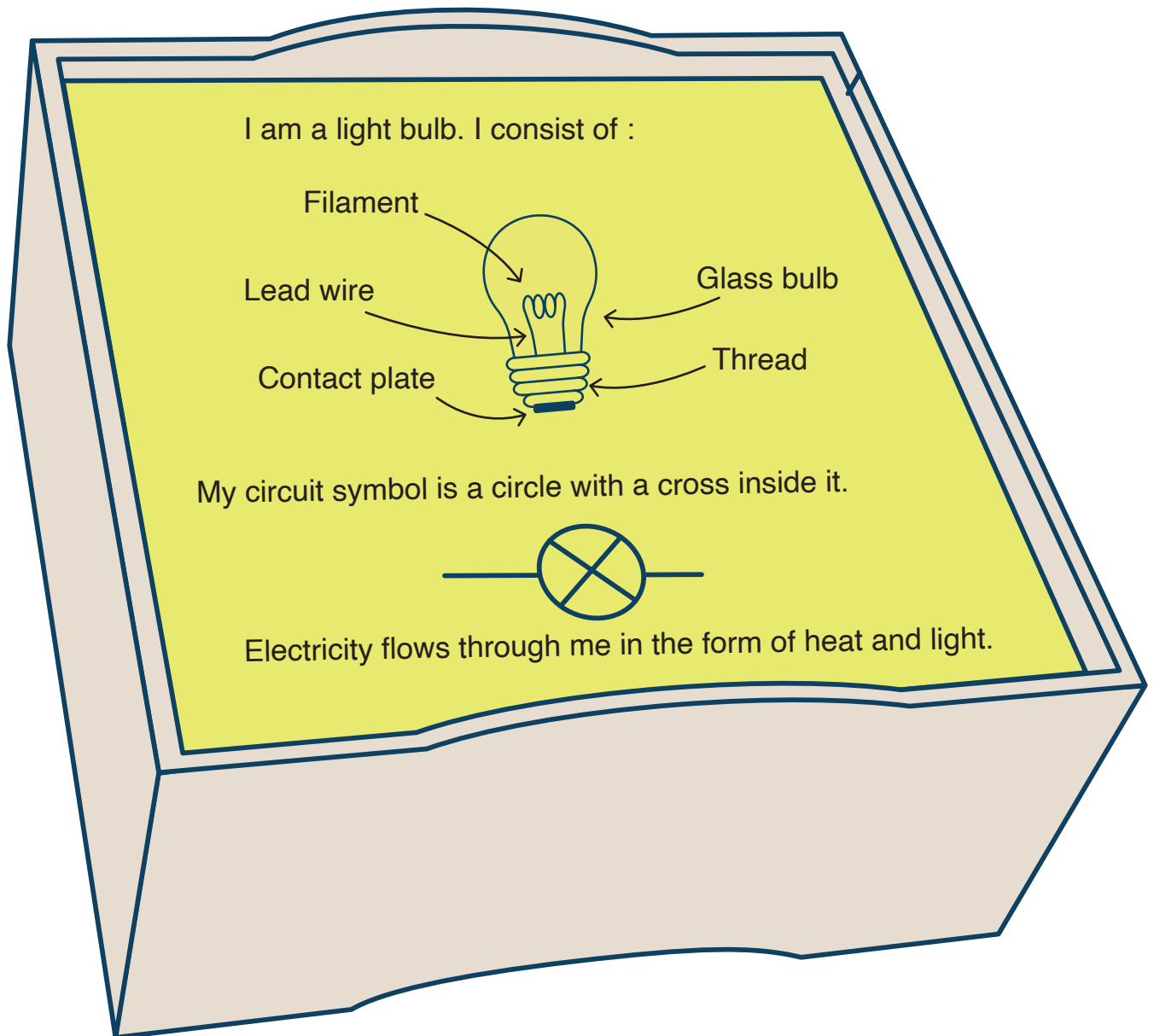
Glass

Ceramic

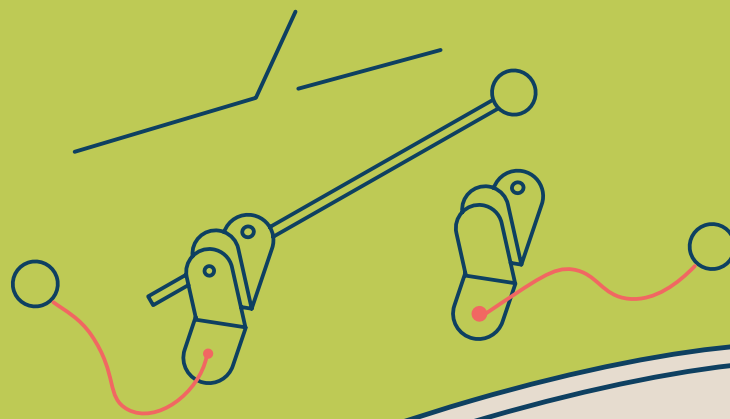
Graphite

Coal

Tip cards



I am a switch.
I consist of two poles that I can connect
or disconnect. My circuit symbol is a slanted bar above
a broken conductor.



I am a rechargeable power source, also known as a "battery."
My circuit diagram is a long line for + and a short line for - facing each other.



I can come in many different shapes, but I always have two poles.

